



ChangZhou Compact Textile Machinery Co., Ltd
(C-CCTM®)

HJ-4 COMPACT SPINNING SYSTEM



R & D --- Advantage
Quality --- Reputation
Service --- Satisfaction... } Biggest Export Market share

COMPACT SPINNING SYSTEM



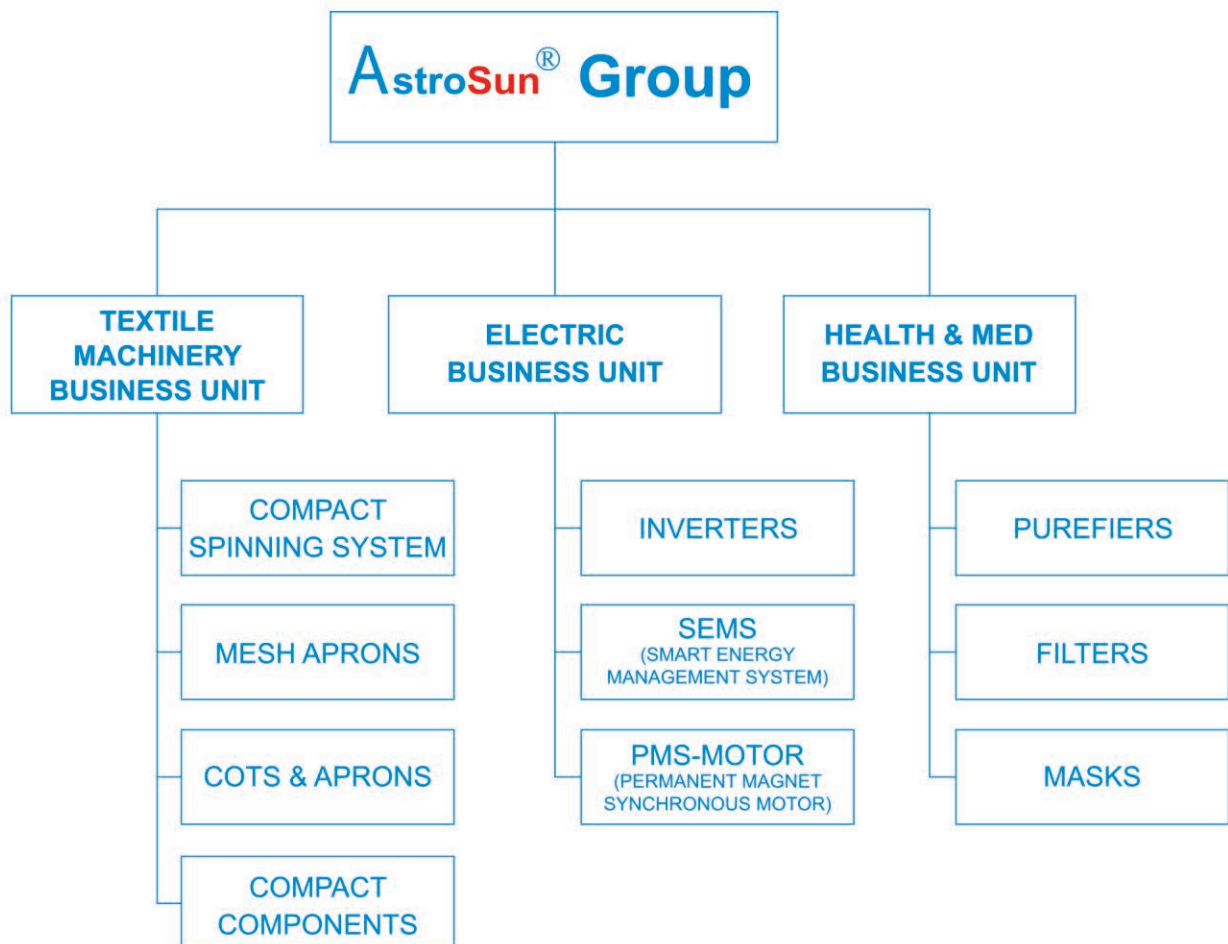
Mission: Innovating and manufacturing high precision and professional textile components for worldwide spinning mills and ring frame manufacturers.



AstroSun® Group was founded in 2008, located in Wuxi City, Jiangsu, China, near Shanghai. It takes about 2.5 hours to drive from Shanghai PVG airport to Astrosun Head Office. Wuxi is a famous city in China because of its fascinating culture and abundant industry resources.

AstroSun® is an innovation-oriented enterprise that cooperates closely with universities on R&D and also employee training. Based on continuous tremendous investment and efforts on R&D, **AstroSun**® products keep the leading position on high quality and low cost. Moreover, based on persistent improvement and everlasting focus on service, **AstroSun**® products take more and more market shares.

AstroSun® Group has three business units: Textile Machinery BU, Electric BU and Health & MED BU. Please see below overview about detailed products in each BU.



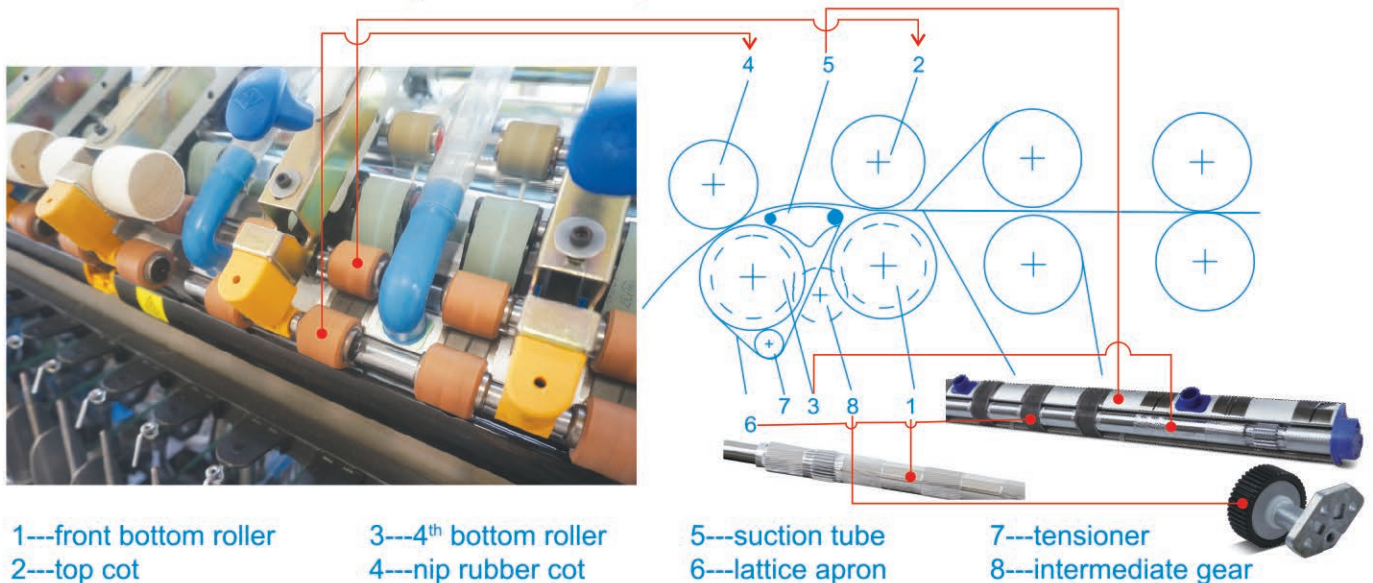
Compact Spinning System is the main product of Textile Machinery BU, which could increase 15%~25% of productivity of ring frame in any textile spinning mill, as well as increase about 8% of yarn quality. Manufacturing subsidiary factory is ChangZhou Compact Textile Machinery Co., Ltd, located at Changzhou city, with 30 years bottom roller manufacturing experience and 12 years compact spinning system manufacturing experience.



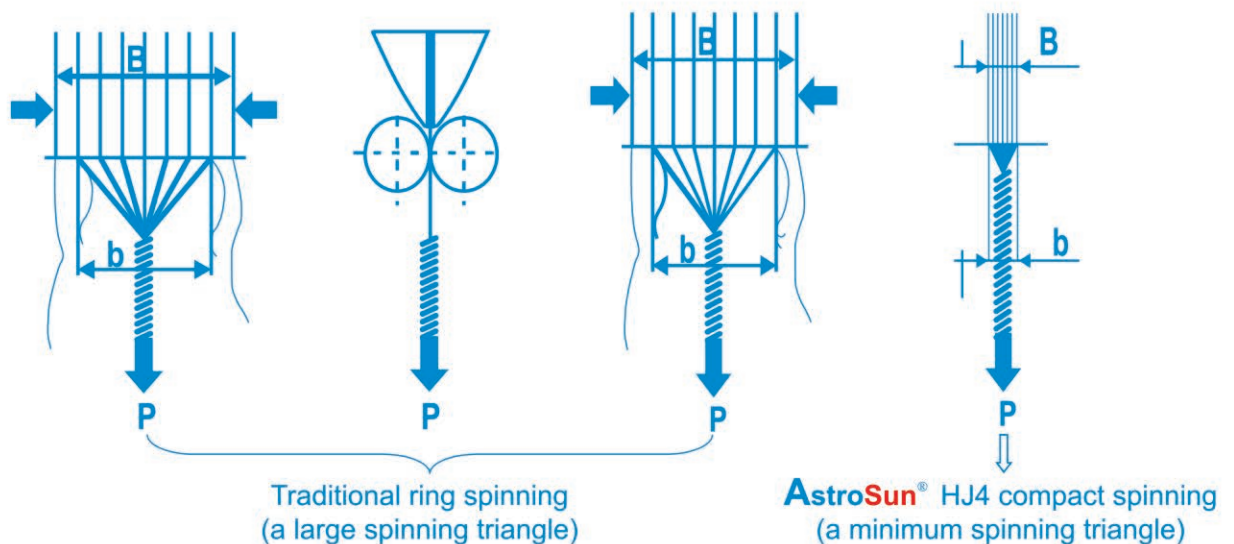
Brief Introduction for AstroSun® HJ4 Compact Spinning Sysetm

AstroSun® HJ4 offer 4 bottom rollers compacting spinning system for spinning machine upgrade, the upgraded spinning frame can significantly improve the yarns quality. This system conversion is suitable for all kinds of spinning machines, it adds compacting system and negative pressure air guiding system on the drafting parts.

The front bottom roller ① drives the 4th bottom roller ③ by intermediate gear ⑧, the 4th roller and the nip rubber cot ④ hold the lattice apron ⑥ for running, the negative pressure is provided by centralized ventilator and airflow suction tube ⑤, 6 spindles as one unit, optimized design of negative pressure distributing the airflow is same on all suction points. The frequency inverter technology is adopted to control the negative pressure for different yarn counts. The lattice apron tensioner ⑦ is adopted, the tension is stable and the lattice apron runs smoothly.



Following pictures state **AstroSun®** HJ4 compact spinning system slots and air flow is getting narrower from front to rear side, and it is twisted from the drafting direction, thus the negative air pressure will make the fibers twisted and compacted tightly on yarn core.





Following pictures states that the yarn by **AstroSun®** HJ4 compact spinning system has less hairiness than the yarn by traditional ring spinning system.



Traditional ring spinning yarn
(more hairiness)



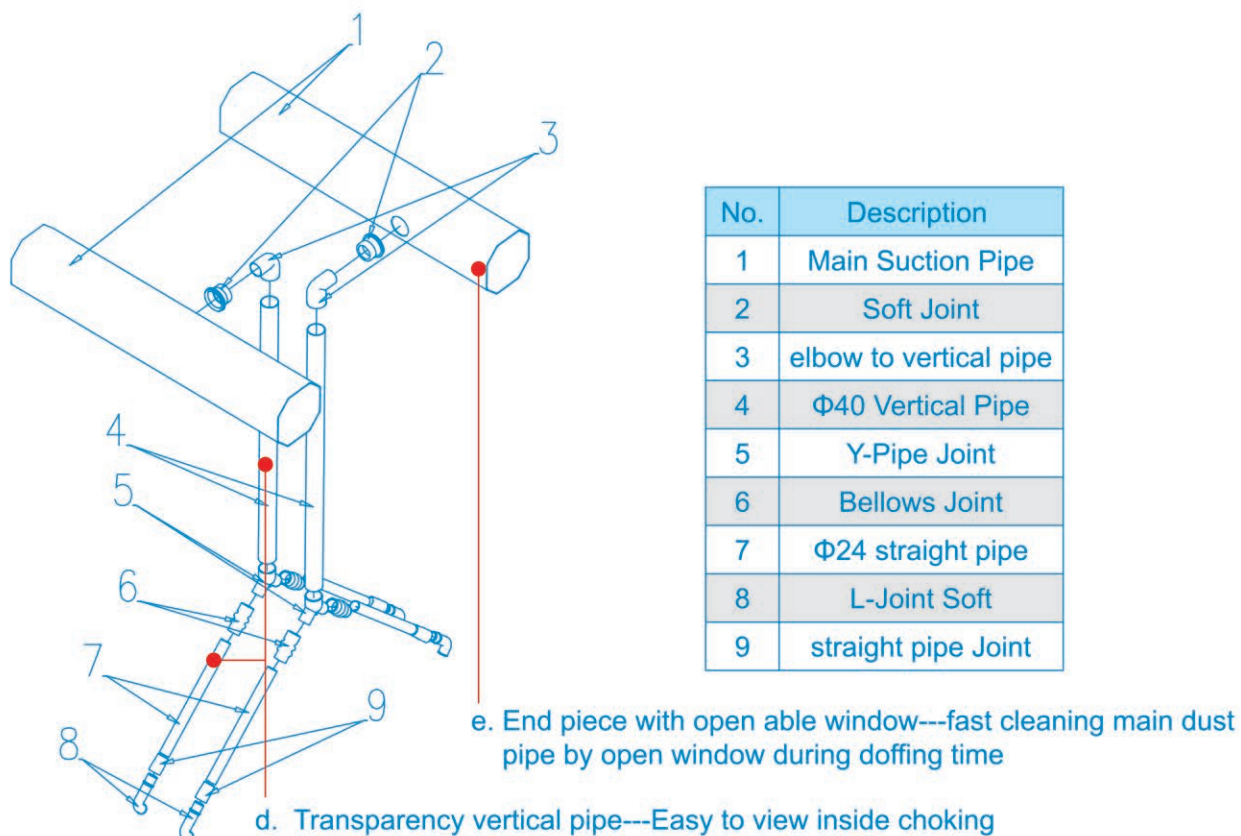
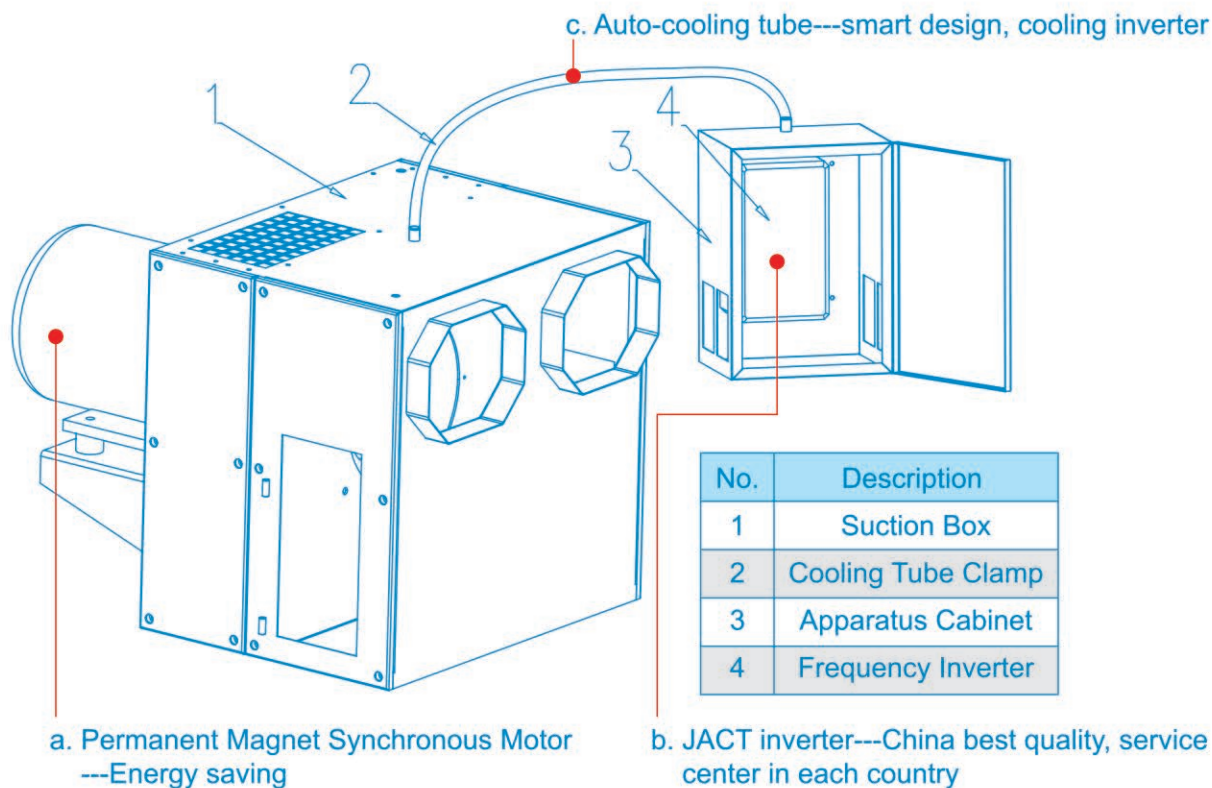
AstroSun® HJ4 compact spinning
(less hairiness)

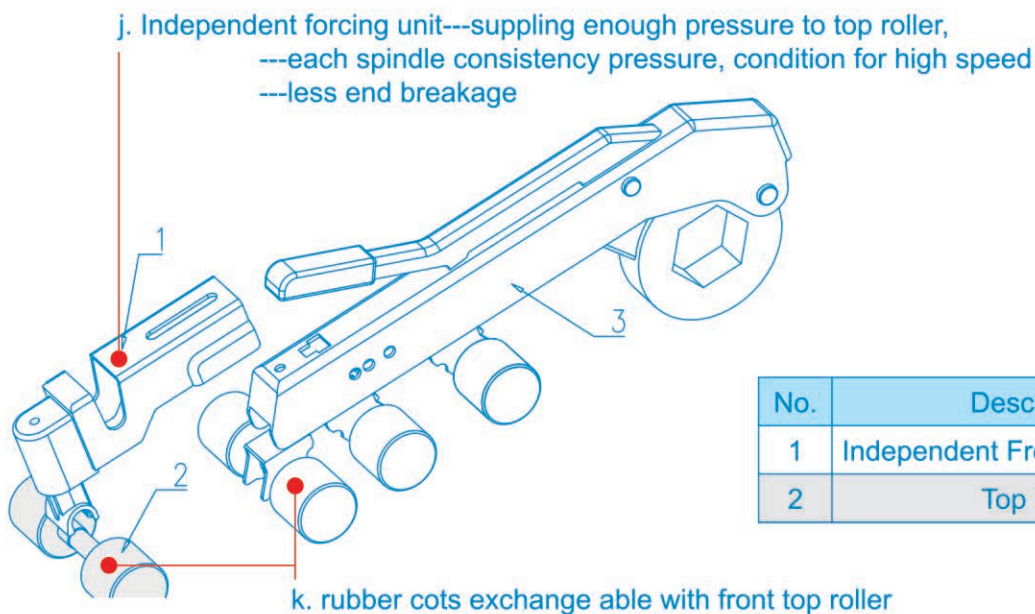
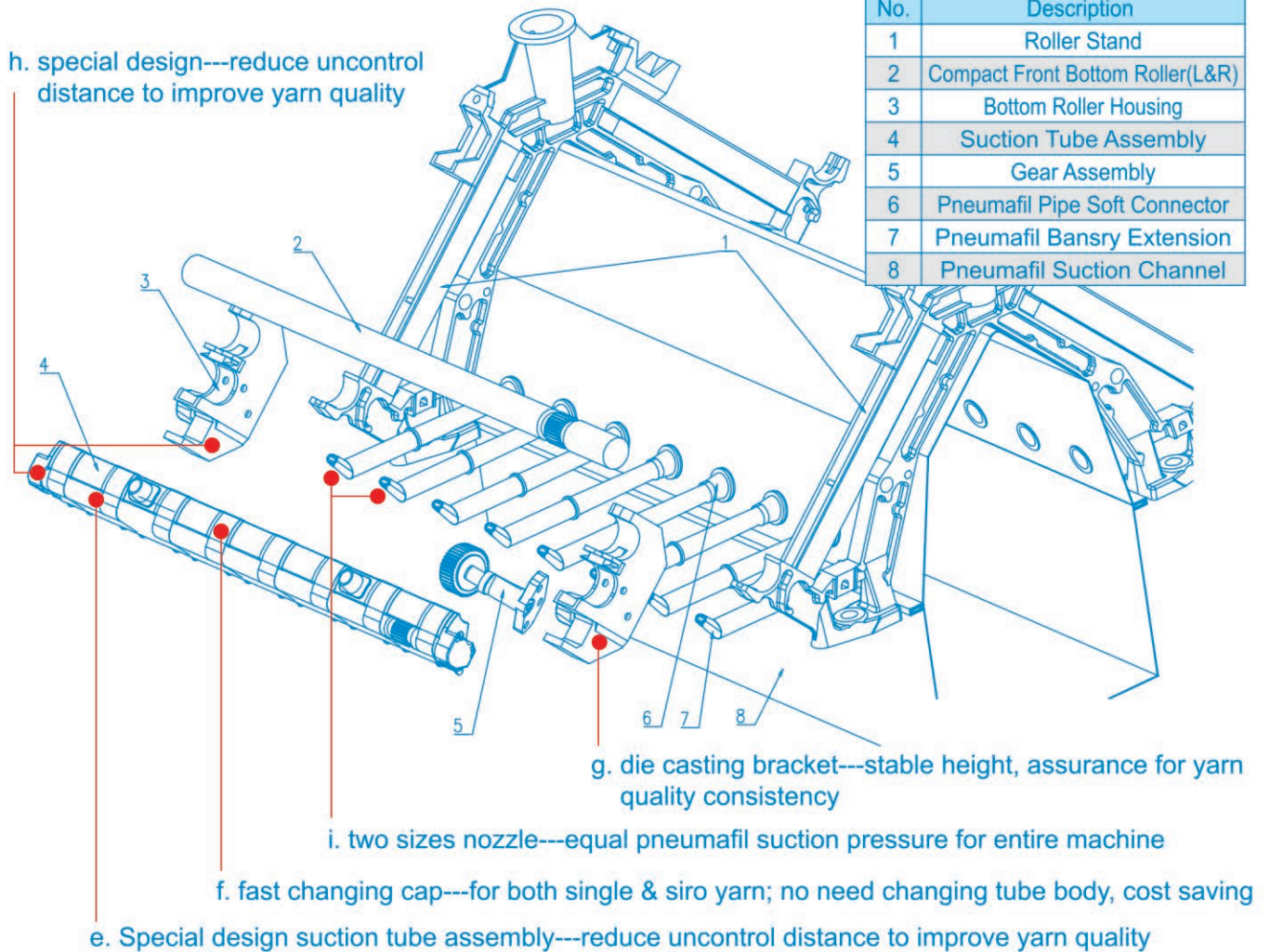
AstroSun® HJ4 compact spinning system have been patented





AstroSun® Compact Spinning Sysetm conversion kit and advantage







Features of AstroSun® Compact Spinning Sysetm

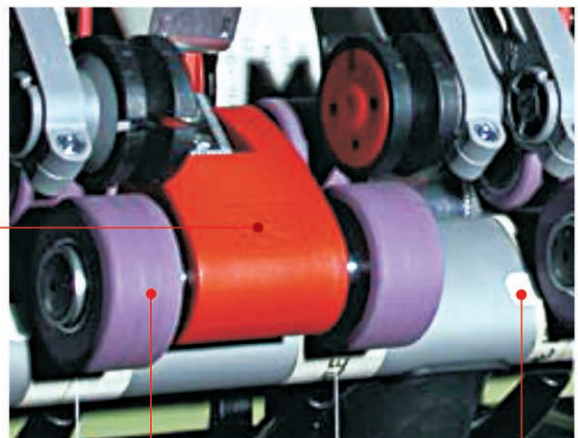
- lower hairiness (60% reduction in hairs more than 3 mm long)
- improved yarn irregularity [Cvm%]
- with same spinning process, the strength of yarns can be improved by 5-15% compared the normal ring spinning.
- improve the material usage
- higher tenacity with the same twist factor, or identical tenacity with reduced twist factor for higher productivity
- improve the workshop environment, reduce flying
- improved yarn imperfections [IPI]

Ring spinning IPI comparison among system of Traditional, HJ4 and Elite (mixed in 30% long staple cotton only)

		Cvm%	Thin -50%	Thick +50%	Neps +200%	H (3mm)	Total IPI	Strength (CN)
Ne 32	Traditional (combed)	10.97	0	3	13	1.97	28.94	287.5
	Elite (combed)	10.81	0	3	11	0.86	25.67	303.6
	UFP-HJ1 (combed)	10.86	0	2	11	0.83	24.69	305.1
Ne 40	Traditional (combed)	11.41	0	7	15	1.52	34.93	228.3
	Elite (combed)	11.36	0	9	11	0.45	31.81	249.8
	UFP-HJ1 (combed)	11.35	0	8	12	0.45	31.80	254.2
Ne 60	Traditional (combed)	12.81	3	22	59	1.08	97.89	173.3
	Elite (combed)	12.79	3	29	51	0.55	96.34	189.7
	UFP-HJ1 (combed)	12.66	1	24	50	0.52	88.18	190.0
Ne 80	Traditional (combed)	13.51	12	23	64	0.92	113.43	153.2
	Elite (combed)	13.38	11	30	71	0.42	125.80	168.1
	UFP-HJ1 (combed)	13.39	10	29	59	0.29	111.68	168.7

Potential saving for fast-moving parts by AstroSun® HJ4 compare to 3 bottom roller compact spinning system

Saving intermediate gears (no risk caused by gear wearing)



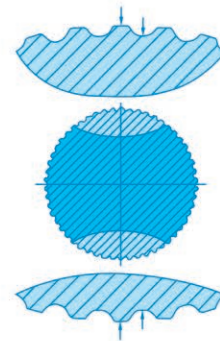
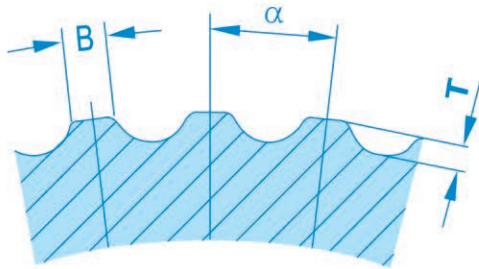
Saving ceramic insert

Less risk for cots grinding

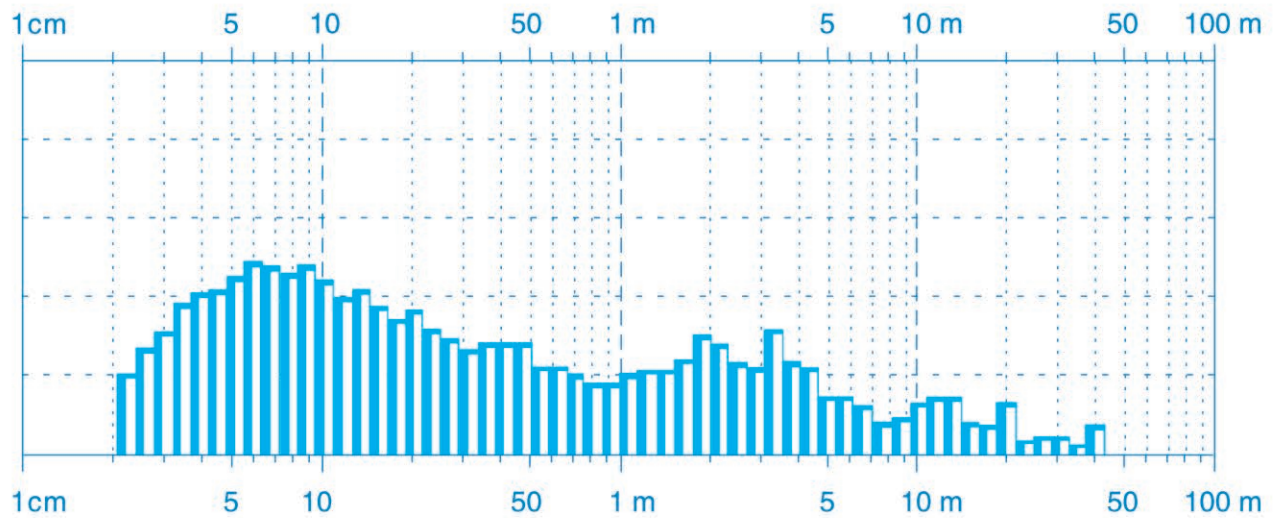
Saving parts = Saving maintenance!

Yarn quality depends on---High Quality of HJ4 compact bottom roller

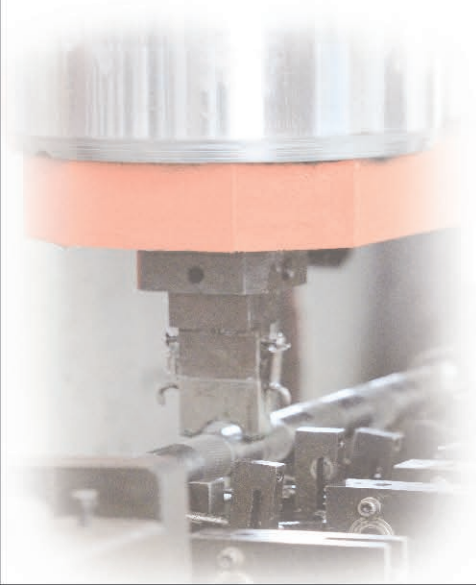
HJ4 bottom rollers with outstanding narrow tolerances of dimensions B , α and T



Bottom roller with flawless flutes



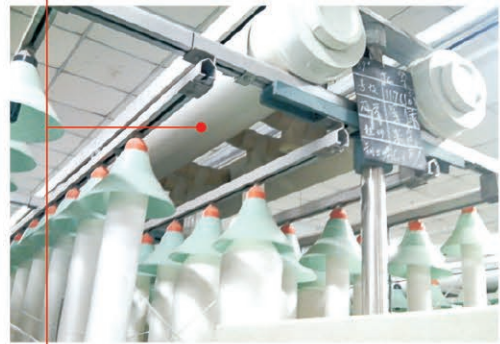
Brings up good yarn evenness



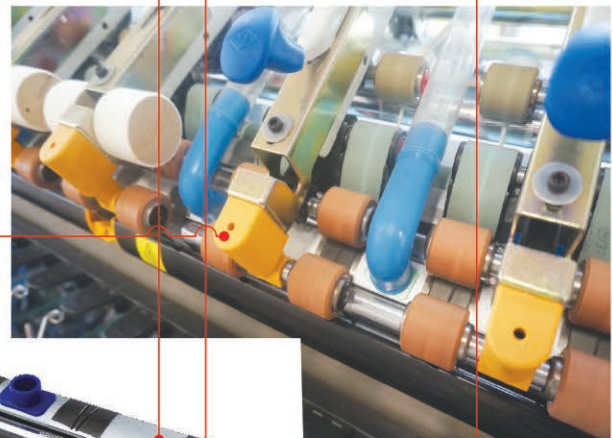


3 Steps easily convert to AstroSun® HJ4 Compact Spinning System

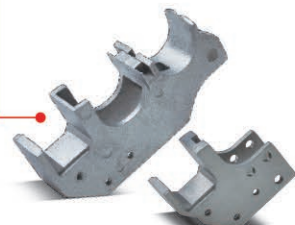
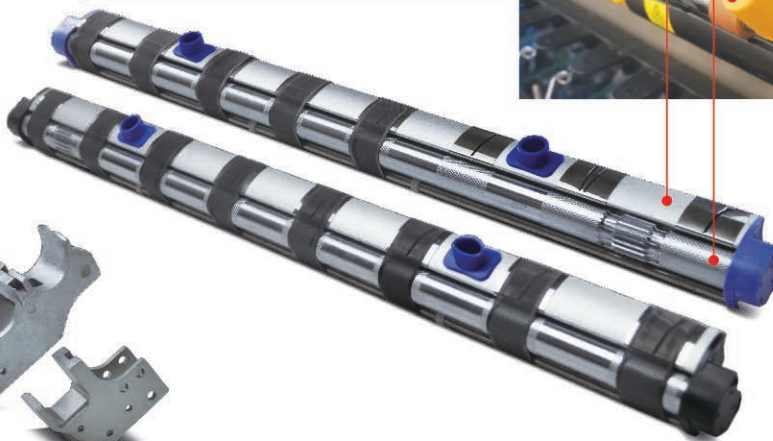
Step 1: Update the Suction Box & Suction Motor and Suction Pipe System



Step 2: Update the Bottom Roller Holder, front bottom roller and the 4th roller and Transfer Gear

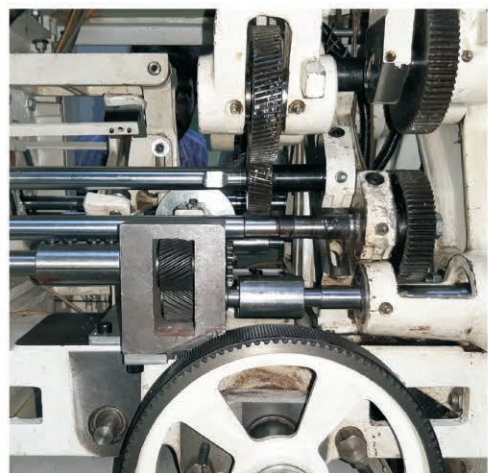


Step 3: Install Independent Forcing Unit



AstroSun® compact spinning system design is covered for almost all various ring frame, had been installed on below ring frames:

Ring Frame Manufacturer	Model of Ring Frame
China, JingWei	FA502, FA503, FA506, FA507, F1508, F1520, FA1520, FA1562
China, Shanghai No.2	EJM128, EJM128A, EJM128L, EJM168, EJM178
China, other Machinery	BS529M, DTM129, DTM199, SXF1598
Japan, Toyota	HAWA UA33F, RY4, RY5, RX240, RXI240, RX300, RXI300
Germany, Rieter	G5/1, G32, G33, G36
India, LMW	G5/1, LR6, LR6/S, LR6SXL, LR60A, LR9, LR9A, LR9A/X, LR9A/XL, LR9SX, LR9SXL





打造纺织机械领域优质品牌



WARRANTY: All ASTROSUN parts and products are thoroughly inspected and tested from the time raw material is received at our plant until the product is completed. We guarantee that all products are free from defects in materials and workmanship for a period of half year from the date of manufacture or shipment from ASTROSUN's plant. Any products that may prove defective within that half year period will, at ASTROSUN's option, be promptly repaired or replaced or credit given for future orders. This warrant shall not apply to any product which has been altered in any way, which has been repaired by any party other than an authorized ASTROSUN Service Representative or when failure is due to misuse or conditions of use. ASTROSUN shall have no liability for special or consequential damages to any party, and shall have no liability for labor costs, freight costs or an other cost or charges in excess of the amount of the invoice for the products. THIS WARRANTY IS IN LIEU OF ALL OTHER WARRANTIES, EXPRESS OR IMPLIED, AND SPECIFICALLY THE WARRANTIES OF MERCHANTABILITY AND FITNESS FOR A PARTICULAR PURPOSE. THERE ARE NO WARRANTIES WHICH EXTEND BEYOND THE DESCRIPTION ON THE FACE HEREOF.

WARNING: ASTROSUN products should be used in compliance with applicable China local laws and regulations. Product selection should be based on physical specifications and limitations and compatibility with environment and material to be handled. ASTROSUN reserves the right to change specifications at any time without incurring obligations.

AstroSun® Group subsidiary factory
ChangZhou Compact Textile Machinery Co., Ltd
QinXing Industry Park, YaoGuan Town, Wujin District, 213001,
Changzhou, JiangSu Province, P.R.China
Tel: +86-519-85267732 Fax: +86-519-85263239
Mobile: +86-13806199712 email: gm@astrosun.cn



About JACT

Wuxi JACT Electric Co., Ltd. was founded in June 2013, located in China Sensor Network International Innovation Park Building A F7, F10 and F11.

The company concentrates on the R&D, production, sales and service of industrial automation products such as Inverter, Electric Vehicle Drive, Synchronous Motor, High-performance Compressor, Servo Drive, SI and etc. It is positioned to serve the manufacturers of industrial equipment. And it continuously provides practical products, convenient service and excellent solutions for customers in specific industries.

Professional Design
Perfect Control
High Efficiency and Energy Saving



Contact

Address: Floor 10, Building A, China Sensor Network International Innovation Park, No.200 Linghu Avenue, 214135 Wuxi, JiangSu Province, P.R.China
Phone: +86-510-85386550
Fax: +86-510-85386553
Cell: +86-13806199712
E-mail: 1713216039@qq.com
Web: www.jact.cc

JACT



SEMS
Smart Energy Management System

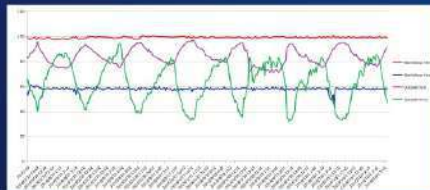
WUXI JACT ELECTRIC CO.,LTD.

Smart Energy Management System

SEMS, a complete system for AC room, which can make the temperature and humidity of workshop follow the setting point and control them more precisely. The temperature and humidity of environment, supply air, return air, water and workshop can be collected all the time, and then the controller will calculate the data according to the requirements, then the fan speed, shutter switch angle and pump spraying effect will be adjusted in real time through PID.



- 1) Five temperature sensors and five humidity sensors are added to SEMS for AC Room.
- 2) All the motors are controlled by special inverters.
- 3) All the shutters are controlled by the servo devices.

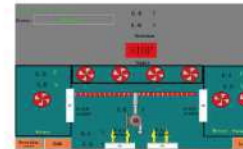


Whether in winter or summer, the temperature and humidity changes during the day, meanwhile SEMS will help the AC Room to control the temperature and humidity of the workshop steady automatically.



Features and Advantages

- ✓ Automatically control temperature and humidity
- ✓ Increase capacity up to 150% in worst season
- ✓ Temperature and humidity control become stable
- ✓ Improve the quality of the yarn more consistently
- ✓ Central automatically control the A/C, reduce the mistake by manual control
- ✓ Energy saving 20%-60% , payback in about 24 month



Payback in 12 Month

- ✓ Power: ESS-126kw
- ✓ Load rate:65%
- ✓ Power saving rate:30%
- ✓ Monthly electricity saving:17690kw/h
 $=126(\text{kwh}) \times 65\% \times 30\% \times 30(\text{d}) \times 24(\text{h})$
- ✓ Electricity charge:\$0.1/kwh
- ✓ Monthly saving:\$1769
 $=17690(\text{kwh}) \times \$0.1/\text{kwh}$
- ✓ Cost of SEMS:\$21420
- ✓ Payback time $\approx \$21420/\$1769=12.1$ months!

Model Selection of SEMS



MODEL SELECTION	APPEARANCE SIZE(mm)		
	H	W	L
8PCS-AT550-15/22kw-CQ	401.5	1620	2100
8PCS-AT550-30/37kw-CQ			
6PCS-AT550-15/22kw-CQ	401.5	1284	2100
6PCS-AT550-30/37kw-CQ			
4PCS-AT550-15/22kw-CQ	401.5	946	2100
4PCS-AT550-30/37kw-CQ			
8PCS-AT550-7.5/11kw-CQ	401.5	1084	2100

JACT

Stock code: 870330

Inverter Selection Catalog



JACT

WUXI JACT ELECTRIC CO.,LTD.

Address: 10th Floor, Building A, China Sensor Network International
Innovation Park, No.200, Linghu Avenue, Wuxi, China

Phone: (+86) 0510-85380261

Fax: (+86) 0510-85380361

Web: www.jact.cc

The series of inverters are developed in cooperation with Swedish experts

JACT

WUXI JACT ELECTRIC CO.,LTD.

Company Introduction

Wuxi JACT Electric Co., Ltd. with completely intellectual property rights mainly engaged in the research, development, production, sales and service of the inverters. Our company is positioned to serve the industrial equipment manufacturers. On the basis of AC drive automatic control technology, we not only provide customers with practical products and convenient services continuously, but also individually tailored product and comprehensive solution for particular industry.

In the core technology of motor drive, our company has the vector control technology and torque control technology that are synchronous with international advanced technical level. Through continuous technical innovation and extensive international technology communications, we have mastered the core technology and capacity of perfect design and production. Therefore, the reliability of the product and the adaptability of the environment are greatly improved.

Now our inverters are widely used in metallurgy, lifting, petroleum, chemical industries, machine tools, metal processing, building materials, stone processing, wood processing, ceramic, plastic, air compressors, washing machines, water supplying, air conditioning, municipal engineering, textile, printing, mining and other industries.

Company Culture: Open Cooperative Innovative Enterprising

Staff Requirements: Truthful Natural Healthy Positive

Company Goals: the most cost-effective products and the most efficient customer service



Qualification honor





Content

- AT580ID Series High-performance Vector Inverter05
- AT500Y Series Permanent Magnet Synchronous Controller06
- AT510A/B Series Construction Lift Machine07
- KY300 Series Asynchronous Servo Energy-saving Controller08
- Expansion Cards09
- Wiring Schematics10
- Technical Specifications11
- Recommended Values of Braking Resistor13
- Appearance and Installation Dimensions14
- Wall-mounted installation size15
- Cabinet Installation Size16
- Sales Areas17
- Industry Applications18

JACT



AT580ID Series High-performance
Vector Inverter



AT500Y Series Permanent Magnet
Synchronous Controller



AT510A/B Series Construction Lift Machine



KY300 Series Asynchronous Servo
Energy-saving Controller

Single-phase 220V 0.75KW~2.2KW
Three-phase 380V 0.75KW~560KW

Product Introduction

The AT580ID series inverter has high-performance vector control and torque control. It adopts the vector control in line with the international leading technology and has the same excellent performance as the international high-end inverter. According to all sectors of the domestic demands, we also provide the second development and design special expansion cards for particular industry.

Technology Characteristics

Vector Control: The asynchronous motor control can be realized by high performance current control technology.

Instantaneous Stop Properties: Momentary Power Interruption with the machine running on.

Timing Control: The set time frame is 0.0min~6500.0min.

RS485 Buses Support

Swing Frequency: The output frequency swing according to the triangle wave set by the customers.

Droop Function: It is suitable for the occasion that multiple motors to drive the same load.

Torque Control: It is suitable for the occasion that require constant tension.

Sleep Function: It is suitable for the air compressor and constant pressure water supplying situation.

Fixed Length Control: Through the high-speed pulse input terminals to form a length closed loop, and then achieve fixed length control.

Applications

Plastics and chemical fiber extrusion equipments, machine tools, textile, industrial washing machines, petroleum, building materials, cement, rubber and plastic machinery and many other industries.



Three-phase 380V 0.75 KW ~450 KW

Product Introduction and Technology Characteristics

- 1、 It is specially developed to drive permanent magnet synchronous motor and can implement high performance vector control of permanent magnet synchronous motor.
- 2、 It uses less electricity than asynchronous frequency conversion.
- 3、 It adopts sensorless open loop synchronous frequency conversion technology.
- 4、 It has a fast response so that the exhaust pressure is more secure.
- 5、 It can reduce the air compressor machine wear , the motor noise and prolong the service life.
- 6、 It has the excellent self-learning function, it can learn the stator resistance, D axis inductance and Q axis inductance accurately.

Applications

Open loop permanent magnet synchronous screw air compressors



Three-phase 380V 37KW 75KW



Technology Characteristics

- 1、Modular design, one-stop solution, highly integrated; (the construction elevator assemblies inverter drives, low voltage logic control, weight limit, brake power output and braking unit)
- 2、It has the zero speed torque retain function, switch up and down directly and supports frequent inching operation;
- 3、The wide speed range not only meets the requirements of lifting equipments, but also improves the work efficiency of the equipments;
- 4、Wide voltage input range can regulate voltage automatically, When the network voltage drops, it still can guarantee the output to meet the torque output requirements;
- 5、It has double protection of hardware and software overloading, which is safe and reliable;
- 6、It has a dedicated brake control logic to have a great feel for both starting and stopping;
- 7、Its logic control circuit adopts hardware interlocking design, which is more secure and reliable.

Applications

All kinds of hoisting machinery, such as port, metallurgy, electric power, machinery, construction, transportation, energy, water conservancy and other industries.



Three-phase 380V 15KW~132KW

Product Introduction

KY300 series asynchronous servo energy saving controller is a high performance engineering drive product. The product meets the needs of the actual engineering applications and has a series of advantages, such as powerful functionality, flexible configuration, small size, convenient installation and maintenance, etc..

Technology Characteristics

- 1、It can switch the power frequency. When the converter fails, it can switch to the power frequency;
- 2、It has the sensorless vector control technology that are synchronous with international advanced technical level and has excellent electric drive performance;
- 3、It has independent air duct design that can effectively solve the problem of heat dissipation in frequency converter. It can be applied to a variety of complex environment and prolong the service life of the production;
- 4、It can save energy efficiently, and the electricity saving rate is 15% ~ 45%;
- 5、The in-built PID controller can automatically sleep and awaken;
- 6、Its energy efficiency is more pronounced;
- 7、Momentary power interruption with the machine running on.

Applications

Air compressor, die-casting machine, injection molding machine, etc.



JACT | Expansion Cards



Multi function I/O expansion card

5 digital input terminals
1 relay output terminal



RS485 expansion card

Provide RS485 physical communication interface
MODBUS RTU Ss standard communication protocol



Current conversion card for injection moulding machine

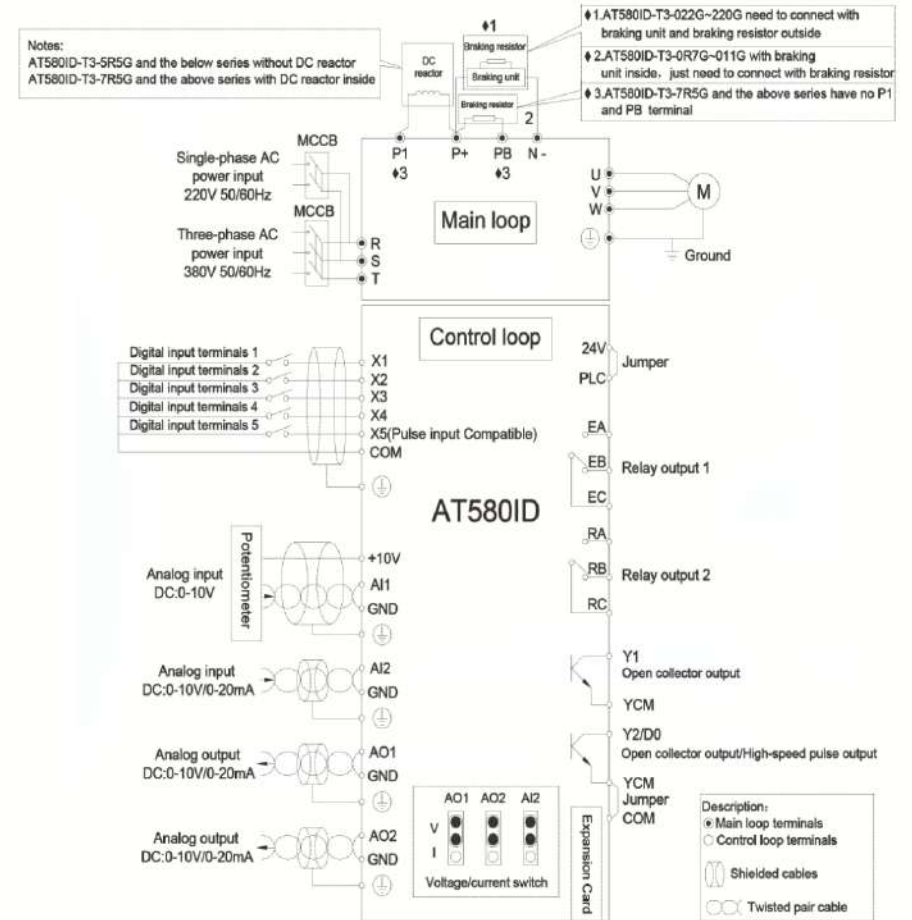
The current signal of the input 0-1A can be converted into a voltage signal of 0-10V



Pulse Generator expansion card

receive a high-speed pulse from the feedback of the encoder
implement high precision closed loop vector control
open circuit collector input and differential input can be compatible
provide the power of 15V, the maximum output current is 100mA

JACT | Wiring Schematics



Project		Specification
Basic functions	Maximum frequency	300Hz
	Carrier frequency	0.5kHz~16.0kHz; Depending on the load characteristics, and automatically adjust the carrier frequency.
	Input frequency resolution	Digital set:0.01Hz Simulation set:The highest frequency × 0.025%
	Control mode	V/F Control,SVC,FVC
	Startup torque	150%
	Speed range	1:100(SVC) 1:1000(FVC)
	Speed stability accuracy	± 0.5%(SVC) ± 0.02%(FVC)
	Overload capacity	G type machine: 150%rated current 60s,180%rated current 3s P type machine: 120% rated current 60s,150%rated current 3s
	Torque boost	Automatic torque boost; Manual torque boost 0.1%~30.0%
	V/F curve	Straight line V/F,Multi-point V/F,N-th power V/F · Straight-line ramp · S-curve ramp
	Ramp mode	Four groups of acceleration/deceleration time with the range of 0.0 – 6500.0s
	DC braking	DC braking frequency: 0.00 Hz to maximum frequency Braking time: 0.0 – 100.0s Braking action current value: 0.0%~100.0%
	JOG control	JOG frequency range: 0.00 – 50.00 Hz JOG acceleration/deceleration time: 0.0 – 6500.0s
	Onboard multiple preset speeds	It implements up to 16 speeds via the simple PLC function or combination of DI terminal states.
	Onboard PID	It realizes process-controlled closed loop control system easily.
	Auto voltage regulation (AVR)	It can keep constant output voltage automatically when the mains voltage changes.
	Overvoltage/Overcurrent stall control	The current and voltage are limited automatically during the running process so as to avoid frequent tripping due to overvoltage/overcurrent.
	Fast current limit function	Minimize the over-current fault,and protect the normal operation of the AC drive.
	Torque limit and control	It can limit the torque automatically and prevent frequent over current tripping during the running process. Torque control can be implemented in the CLVC mode.
Individuali-zed functions	High performance	Control of asynchronous motor and synchronous motor are implemented through the high-performance current vector control technology.

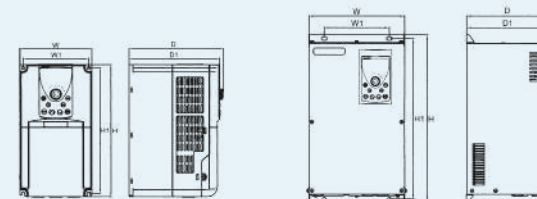
Project		Specification
Individuali-zed functions	Power dip ride through	The load feedback energy compensates the voltage reduction so that the AC drive can continue to run for a short time.
	Timing control	Time range: 0.0 – 6500.0 minutes
	RS485 bus support	Modbus-RTU protocol
Running	Running command source	· Operation panel · Control terminals · Serial communication port You can perform switch over between these sources in various ways.
	Frequency source	There are a total of 13 frequency sources, such as digital setting, analog voltage setting, analog current setting, pulse setting and serial communication port setting,variety of speed PLC, PID. You can perform switch over between these sources in various ways.
	Auxiliary frequency source	There are 13 auxiliary frequency sources. It can implement fine tuning of auxiliary frequency and frequency synthesis.
	Input terminals	5 digital input (DI) terminals, X5 supports up to 100 kHz high-speed pulse input; 2 analog input (AI) terminals, A1 only supports 0 – 10 V voltage input and A2 supports 0 – 10 V voltage input or 4 – 20 mA current input.
	Output terminals	1 high-speed pulse output terminal (open-collector) that supports 0 – 100 kHz square wave signal output 1 digital output (DO) terminal 2relay output terminals 2 analog output (AO) terminals that supports 0 – 20 mA current output or 0 – 10 V voltage output.
	LED display	Display parameters (three display modes: Basic Mode, Quick Menu mode, non-factory value mode).
Display and keyboard	Protection mode	Motor short-circuit detection at power-on, input/output phase loss protection, over current protection, over voltage protection, under voltage protection, overheat protection and overload protection.
	Optional parts	Braking unit, I/O extension card, RS485 communication card, PROFIBUS-DP communication card, differential input PG card, OC input PG card.
	Environment	Indoor, free from direct sunlight, dust, corrosive gas, combustible gas, oil smoke, vapour, drip or salt.
Environment	Altitude	Lower than 1000 m
	Ambient temperature	-10° C to +40° C (de-rated if the ambient temperature is between 40° C and 50° C).
	Humidity	Less than 95%RH, without condensing
	Vibration	Less than 5.9 m/s ² (0.6 g)
	Storage temperature	- 20℃~ + 60℃

JACT Recommended Values of Braking Resistor

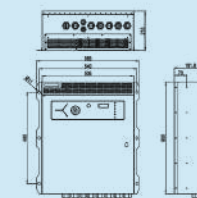
inverter models	Braking resistance recommend power	Braking resistance recommend resistance	Brake unit
AT580ID-T3-0R7G/1R5PB	150W	$\geq 300 \Omega$	Built-in (standard)
AT580ID-T3-0R75G/1R5PB	150W	$\geq 220 \Omega$	
AT580ID-T3-1R5G/2R2PB	250W	$\geq 200 \Omega$	
AT580ID-T3-2R2G/4R0PB	300W	$\geq 130 \Omega$	
AT580ID-T3-2R2BG/4R0BPB	400W	$\geq 90 \Omega$	
AT580ID-T3-4R0G/5R5PB	500W	$\geq 65 \Omega$	
AT580ID-T3-5R5G/7R5PB	800W	$\geq 43 \Omega$	
AT580ID-T3-7R5G/011PB	1.0KW	$\geq 32 \Omega$	
AT580ID-T3-7R5BG/011BPB	1.3KW	$\geq 25 \Omega$	
AT580ID-T3-011G/015PB	1.5KW	$\geq 22 \Omega$	
AT580ID-T3-015G/018PB	2.5KW	$\geq 16 \Omega$	Built-in (optional)
AT580ID-T3-018G/022PB	3.7 KW	$\geq 12.6 \Omega$	
AT580ID-T3-022G/030PB	4.5 KW	$\geq 9.4 \Omega$	External
AT580ID-T3-030G/037P	5.5 kW	$\geq 9.4 \Omega$	
AT580ID-T3-037G/045P	7.5 kW	$\geq 6.3 \Omega$	
AT580ID-T3-045G/055P	4.5 kW × 2	$\geq 9.4 \Omega \times 2$	
AT580ID-T3-055G/075P	5.5 kW × 2	$\geq 9.4 \Omega \times 2$	
AT580ID-T3-055BG/075BP	6.5 kW × 2	$\geq 6.3 \Omega \times 2$	
AT580ID-T3-075G/090P	16 kW	$\geq 6.3 \Omega \times 2$	
AT580ID-T3-090G/110P	20 kW	$\geq 2.5 \Omega$	
AT580ID-T3-110G/132P	22 kW	$\geq 2.5 \Omega$	
AT580ID-T3-132G/160P	12.5 kW × 2	$\geq 2.5 \Omega \times 2$	
AT580ID-T3-132BG/160BP	14 kW × 2	$\geq 2.5 \Omega \times 2$	
AT580ID-T3-160G/185P	16 kW × 2	$\geq 2.5 \Omega \times 2$	
AT580ID-T3-160BG/185BP	17 kW × 2	$\geq 2.5 \Omega \times 2$	
AT580ID-T3-200G/220P	14 kW × 3	$\geq 2.5 \Omega \times 3$	
AT580ID-T3-220G/250P	15 kW × 3	$\geq 2.5 \Omega \times 3$	

JACT Appearance and Installation Demensions

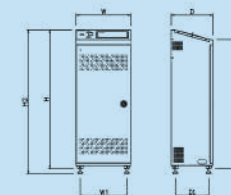
AT580ID Series
and
AT500Y Series
Inverter



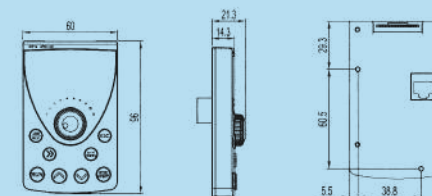
AT510A/B
Series
Construction
Lift Machine



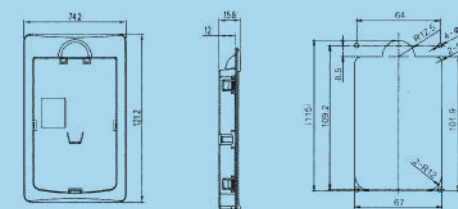
KY300 Series
Asynchronous
Servo
Energy-saving
Controller



Appearance
and
Installation Size
of the Keyboard



Appearance
and
hole size
of
the keyboard tray

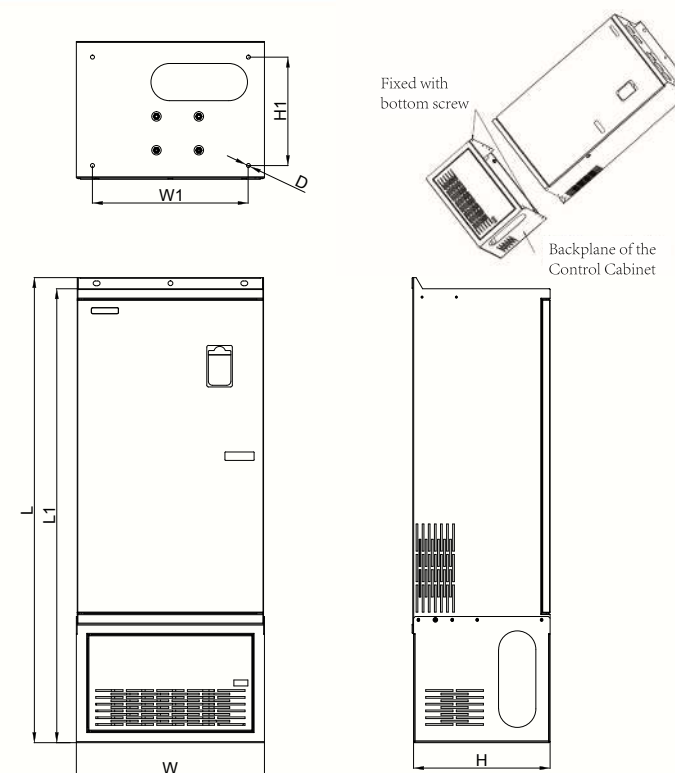


Pallet opening dimensions
Also can open hole
115mm*67mm

JACT Wall-mounted installation size (mm)

Model	Mounting holes locations		Dimensions				Diameter of mounting hole
	W1	H1	H	W	D1	D	
AT580-S2-0R7GB	71.5	121.5	132	80	105.5	114.6	φ 4.5
AT580-S2-1R5GB							
AT580-S2-2R2GB							
AT580ID-T3-0R7G/1R5PB	88.4	168.4	180	100	152	159	φ 5.5
AT580ID-T3-0R75G/1R5PB							
AT580ID-T3-1R5G/2R2PB							
AT580ID-T3-2R2G/4R0PB	118.4	224.5	236	130	163.5	170.5	φ 5.5
AT580ID-T3-2R2BG/4R0BPB							
AT580ID-T3-4R0G/5R5PB							
AT580ID-T3-5R5G/7R5PB	141	243	260	155	175	182	φ 7
AT580ID-T3-7R5G/011PB							
AT580ID-T3-7R5BG/011BPB							
AT580ID-T3-011G/015PB	160	440	460	230	212	220	φ 10
AT580ID-T3-015G/018PB							
AT580ID-T3-018G/022PB							
AT580ID-T3-022G/030PB	190	555	575	305	215	224	φ 10
AT580ID-T3-030G/037P							
AT580ID-T3-037G/045P							
AT580ID-T3-045G/055P	230	643	670	390	290	298	φ 12
AT580ID-T3-055G/075P							
AT580ID-T3-055BG/075BPB							
AT580ID-T3-075G/090P	260	717	738	410	285	294	φ 10
AT580ID-T3-090G/110P							
AT580ID-T3-110G/132P							
AT580ID-T3-132G/160P	320	780	810	455	315	324	φ 12
AT580ID-T3-132BG/160BPB							
AT580ID-T3-160G/185P							
AT580ID-T3-160BG/185BPB	360	845	880	530	367	376	φ 14
AT580ID-T3-200G/220P							
AT580ID-T3-220G/250P							

JACT Cabinet Installation Size (mm)



Model	H	W	L	L1	H1	W1	φD
AT580ID-T3-075G/090P	367	536	1190	1142	290	460	φ 12
AT580ID-T3-090G/110P							
AT580ID-T3-110G/132P	412	656	1400	1354	300	560	φ 12
AT580ID-T3-132BG/160BPB							
AT580ID-T3-160G/185P	428	815	1757	1702	300	730	φ 12
AT580ID-T3-200G/220P							

Intentions of service / The pursuit of excellence

Our company inherits the service aim that offer various high-quality products and best service for customers. We continually strengthen management, improve the system, innovate products and develop new market to build first-class enterprises. Besides, we will provide quality products and excellent service in return to our customers and society and win the trust and favor of customers.

We are ready to cooperate with you sincerely, hand in hand, mutually beneficial win-win and creat brilliance.



Your satisfaction is our eternal pursuit.

We'll be the most reliable person and product the most reliable products.

Our company owns advanced production equipments, excellent production management team, positive front-line staff and good products. We do not accept, manufacture and transfer bad products. In order to ensure the product high quality and provide customers with first-class products and best service, we strengthen each production procss, understd the every detail of products, from the first step of production to the finished product installation, all products are inspected strictly.

Machine tool industry



Advanced software algorithms, high control precision;
Low frequency performance is very good and the torque can be automatically increased.
Overload performance is good and the biggest range can reach 200% overload current.
To run a custom curve according to the load requirement.
It has the S curve deceleration and acceleration mode, which can prevent the impact of the load in the process of acceleration and deceleration.
Product process are reliable and it can adapt to harsh industrial environment.

Air compressor industry



V/F control, open-loop vector control, closed-loop vector control
Closed-loop control process can be achieved by the built-in PID.
Energy saving up to 15% - 45%.
Equipment will shutdown when the pressure is sufficient by the built-in sleep function.

Wood processing industry



Built-in rotary cutting machine, rolling machine, peeling machine process algorithm.
The inverter has wide voltage range and built-in automatic pressure implicit function which are suitable for the occasion of grid conditions.
Reduce mechanical damage and maintenance costs.

The oil industry



Higher power saving effect, less harmonic and reactive current.
Providing outdoor digital control cabinet; constant temperature control cabinets can work in the low and high temperature reliably in the wild.
Built-in brake unit under 37KW, bus line can run normally in charging and discharging environment.
The inverters below 37KW can run normally even if the bus line is in charging and discharging environment.

Crane industry



Excellent torque control, reliable brake timing.
Professional crane control function: speed monitor, torque monitor, power optimization, etc.

Industrial washing machine



Starting torque is large;
Speed is stable and it won't lose speed in acceleration and deceleration.
Wide speed range;
Load attain to the maximum when second water addition and the low frequency torque output can meet the requirements. It can switch 16 speeds quickly by multi-function terminal switches.

The textile industry



Special dust cover makes cotton can't into the inverter;
It's simple to remove the fan and clean it;
Swing Frequency function is suitable for yarn winding equipment.

Injection molding machine

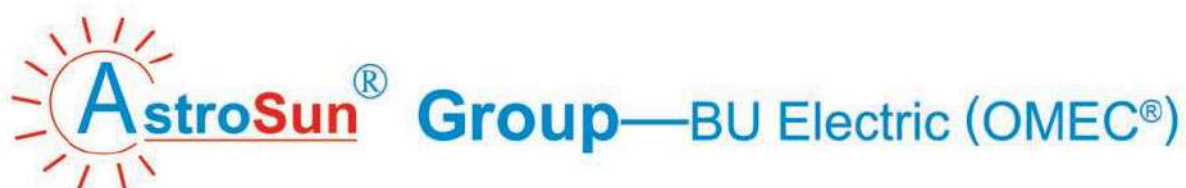


Energy saving up to 15% - 45%;
Optimization of electrical facilities; Reduce the hydraulic motor load;
Extend the service life of the machine
Operate easily; it doesn't need to adjust saver in production and it has automatic tracking control and many kinds of protection functions which are simple, safe and convenient.

Stone processing industry



Reduce the machine damage and maintenance costs.
The operation is simple and it has less install cables.
Running curve is smooth and plate breakage is lower.



无锡泰克泰高科技有限公司

WUXI TGT HIGH TECHNOLOGY LTD



**PERMANENT MAGNET
SYNCHRONOUS MOTOR**



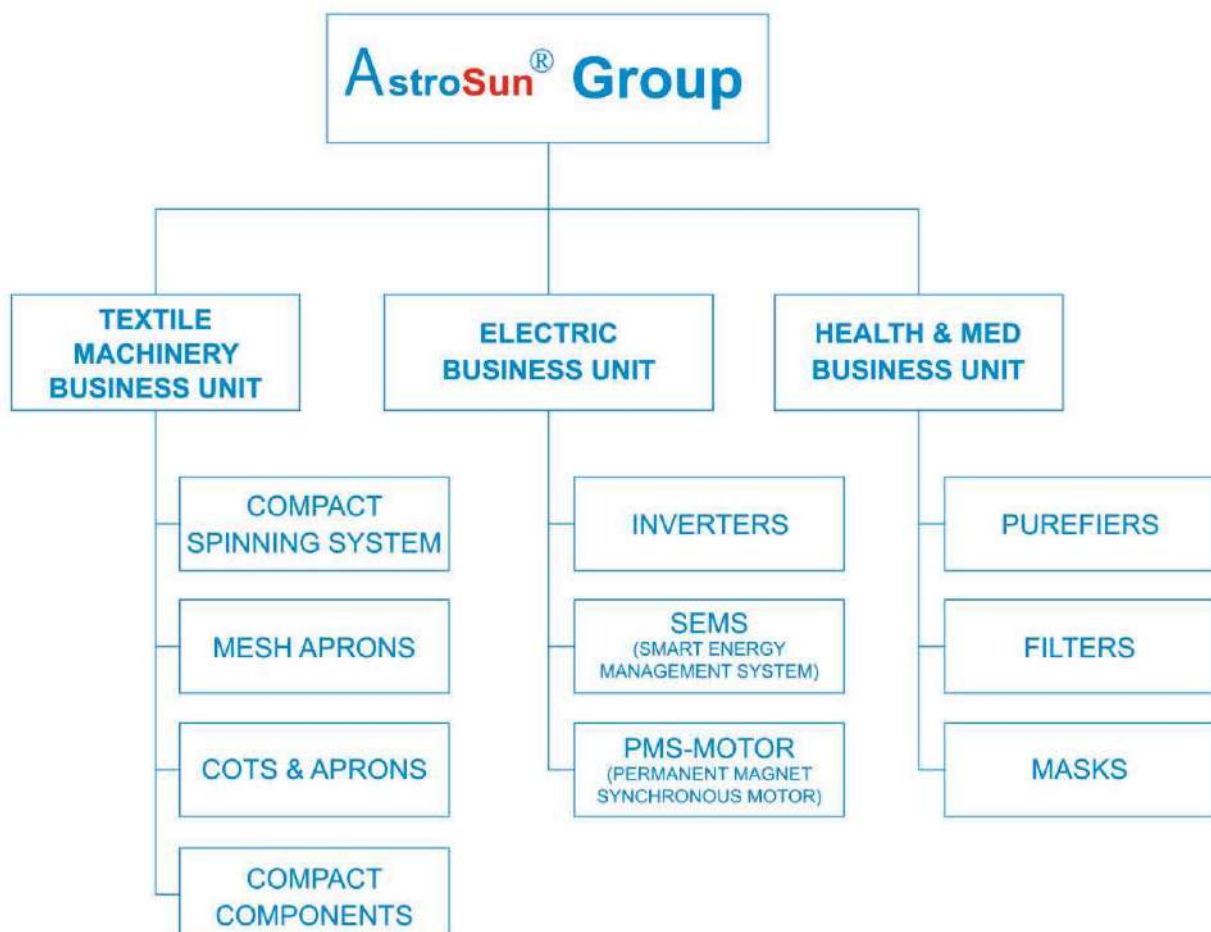
Mission: Innovating and manufacturing high precision and professional electric components for worldwide



AstroSun[®] Group was founded in 2008, located in Wuxi City, Jiangsu, China, near Shanghai. It takes about 2.5 hours to drive from Shanghai PVG airport to Astrosun Head Office. Wuxi is a famous city in China because of its fascinating culture and abundant industry resources.

AstroSun[®] is an innovation-oriented enterprise that cooperates closely with universities on R&D and also employee training. Based on continuous tremendous investment and efforts on R&D, **AstroSun**[®] products keep the leading position on high quality and low cost. Moreover, based on persistent improvement and everlasting focus on service, **AstroSun**[®] products take more and more market shares.

AstroSun[®] Group has three business units: Textile Machinery BU, Electric BU and Health & MED BU. Please see below overview about detailed products in each BU.





生产设备 Production equipment





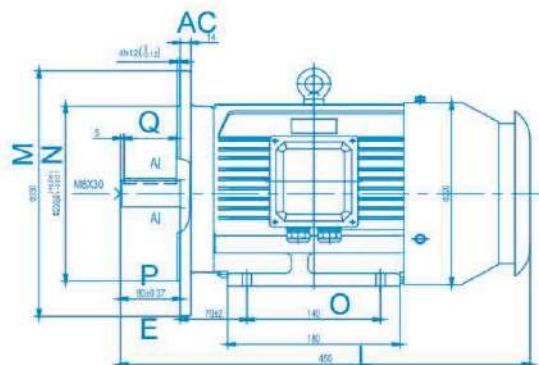
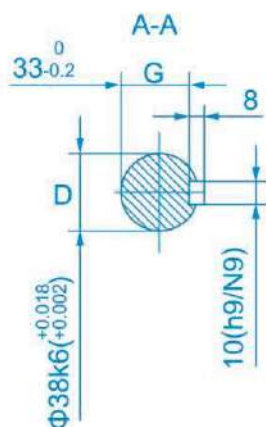
生产设备 Production equipment



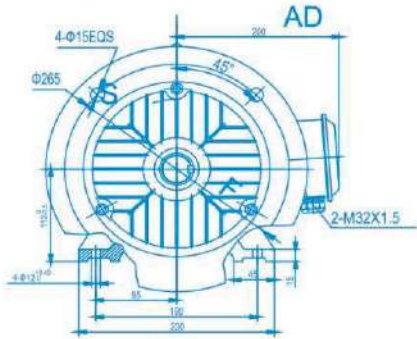


国家授权第三方检测中心 National authorized PM motor testing center





机座型号	极数	技术参数 Technical specification							
Frame Designation	Poles	Torque 扭矩	Kw 功率	V 电压	Hz 频率	r/min 转速	η (100%) 效率	Cos ϕ	A 电流
5.5kw-112M	8	17.5	5.5	400	200Hz	3000	93.0%	0.96	9.6
7.5kw-112M	8	23.9	7.5	400	200Hz	3000	93.0%	0.96	13
7.5kw-112M	8	47.8	7.5	400	100Hz	1500	92.6%	0.96	13.5
9kw-112M	8	28.65	9	400	200Hz	3000	93.0%	0.96	15.5
11kw-112M	8	35	11	400	200Hz	3000	93.0%	0.96	18.8
15kw-112M	8	47.8	15	400	200Hz	3000	93.3%	0.96	25.4
11kw-132M	8	70	11	400	100Hz	1500	93.6%	0.96	19.6
15kw-132M	8	95.5	15	400	100Hz	1500	94.0%	0.96	26.7
18.5kw-132M	8	117.8	18.5	400	100Hz	1500	94.3%	0.96	32.8
22kw-132M	8	140	22	400	100Hz	1500	94.7%	0.96	38.8
22kw-132M	8	70	22	400	200Hz	3000	94.0%	0.96	37
22kw-160L	8	140	22	400	100Hz	1500	94.7%	0.96	38.8
30kw-180L	8	191	30	400	100Hz	1500	95.0%	0.96	51.3
34kw-180L	8	216.5	34	400	100Hz	1500	95.1%	0.96	58.1
37kw-180L	8	235.6	37	400	100Hz	1500	95.3%	0.96	63.1
40kw-180L	8	254.6	40	400	100Hz	1500	95.4%	0.96	70
45kw-180L	8	286.5	45	400	100Hz	1500	95.6%	0.96	76.5
55kw-180L	8	350.2	55	400	100Hz	1500	95.8%	0.96	93.3
30kw-160L	8	191	30	400	100Hz	1500	95.0%	0.96	52.8
34kw-160L	8	216	34	400	100Hz	1500	95.0%	0.96	59.8
37kw-225S	8	235.6	37	400	100Hz	1500	95.3%	0.96	61.4
40kw-225S	8	254.6	40	400	100Hz	1500	95.4%	0.96	66.3
45kw-225S	8	286.5	45	400	100Hz	1500	95.6%	0.96	74.5



	安装尺寸 Mounting Dimension (mm)							外形尺寸 Overall Dimension (mm)		
Weight 重量	D	E	F	G	M	N	S	AC	AD	L
37	38	80	265	33	300	230	4-Φ15	14	200	450
41	38	80	265	33	300	230	4-Φ15	14	200	450
45	38	80	230	33	265	190	4-Φ12	15	200	450
43	42	110	265	37	300	230	4-Φ15	14	200	480
46	42	110	265	37	300	230	4-Φ15	14	200	480
62.1	42	110	265	37	300	230	4-Φ15	14	200	480
56	42	110	265	37	315	260	4-Φ12	18	225	570
68	42	110	265	37	315	260	4-Φ12	18	225	570
87	42	110	300	37	315	260	4-Φ12	18	225	570
83	48	110	320	42.5	385	315	4-Φ15	20	265	685
75	42	80	300	37	350	250	4-Φ19	15	240	550
83	48	110	254	42.5	385	320	4-Φ15	20	265	685
120	55	110	279	49	430	365	4-Φ19	22	330	720
140	55	110	279	49	430	365	4-Φ19	22	330	720
150	55	110	279	49	430	365	4-Φ19	22	330	720
160	55	110	279	49	430	365	4-Φ19	22	330	720
175	55	110	279	49	430	365	4-Φ19	22	330	720
200	55	110	279	49	430	365	4-Φ19	22	330	676
99	48	110	254	42.5	385	320	4-Φ15	20	265	685
100	48	110	254	42.5	385	320	4-Φ15	20	265	685
242	55	110	368	49	431	356	4-Φ19	16	335	810
276	55	110	368	49	431	356	4-Φ19	16	335	810
302	55	110	368	49	431	356	4-Φ19	16	335	810



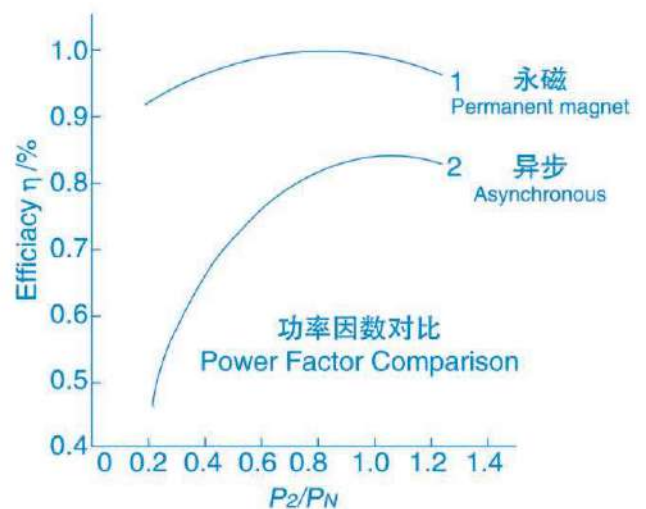
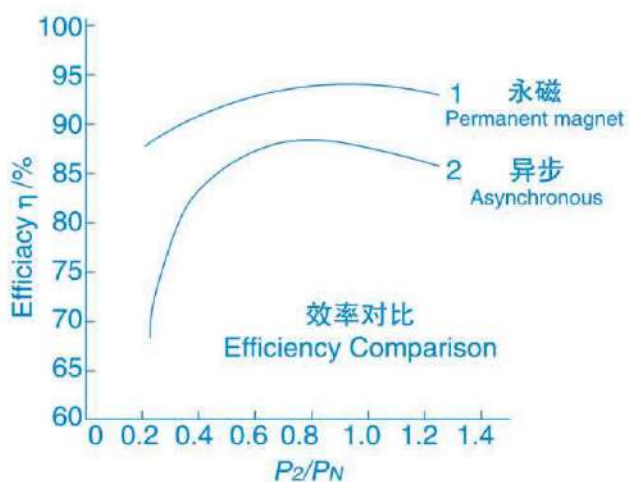
永磁电机的优点

Features of Astrosun PMS Motor:

1. 相比国内同功率异步电机更加节电省电
More energy-saving 5-15% than domestic asynchronous motor with the same power
2. 效率高、噪音低、升温低
High efficiency, low noise, low temperature
3. 采用德国进口FAG/SKF进口轴承，寿命长
Adopt FAG/SKF bearings imported from Germany, with long life
4. 维护保养方便
Convenient maintenance
5. 重量轻，扭矩大，应用范围广
Light weight, large torque, wide application range
6. 与德国OMEC合作，技术领先、质量稳定
Cooperate with Germany OMEC, leading technology and stable quality

电机节电曲线

PMS motor enger saving curve
compare to Asynchronous motor



Energy saving about 5%-25%



Astrosun PMS Motor are used in various industries area:



Wire drawing Machine (direct driving)



Textile Compact Fan



Synthetic Machine



Plastic Injection



For Sea Vessel Driving



WARRANTY: All ASTROSUN parts and products are thoroughly inspected and tested from the time raw material is received at our plant until the product is completed. We guarantee that all products are free from defects in materials and workmanship for a period of half year from the date of manufacture or shipment from ASTROSUN's plant. Any products that may prove defective within that half year period will, at ASTROSUN's option, be promptly repaired or replaced or credit given for future orders. This warrant shall not apply to any product which has been altered in any way, which has been repaired by any party other than an authorized ASTROSUN Service Representative or when failure is due to misuse or conditions of use. ASTROSUN shall have no liability for special or consequential damages to any party, and shall have no liability for labor costs, freight costs or an other cost or charges in excess of the amount of the invoice for the products. THIS WARRANTY IS IN LIEU OF ALL OTHER WARRANTIES, EXPRESS OR IMPLIED, AND SPECIFICALLY THE WARRANTIES OF MERCHANTABILITY AND FITNESS FOR A PARTICULAR PURPOSE. THERE ARE NO WARRANTIES WHICH EXTEND BEYOND THE DESCRIPTION ON THE FACE HEREOF.

WARNING: ASTROSUN products should be used in compliance with applicable China local laws and regulations. Product selection should be based on physical specifications and limitations and compatibility with environment and material to be handled. ASTROSUN reserves the right to change specifications at any time without incurring obligations.

AstroSun® Group subsidiary company
WUXI TGT HIGH TECHNOLOGY LTD
6-1201, NO.19, HEFENG ROAD,
XINGWU DISTRICT-214028,
WUXI, JIANGSU, CHINA

TEL: +86-510-85386550 FAX: +86-510-85386553
Mobile: +86-13806199712 email: gm@astrosun.cn