



About JACT

Wuxi JACT Electric Co., Ltd. was founded in June 2013, located in China Sensor Network International Innovation Park Building A F7, F10 and F11.

The company concentrates on the R&D, production, sales and service of industrial automation products such as Inverter, Electric Vehicle Drive, Synchronous Motor, High-performance Compressor, Servo Drive, SI and etc. It is positioned to serve the manufacturers of industrial equipment. And it continuously provides practical products, convenient service and excellent solutions for customers in specific industries.

Professional Design
Perfect Control
High Efficiency and Energy Saving



Contact

Address: Floor 10, Building A, China Sensor Network International Innovation Park, No.200 Linghu Avenue, 214135 Wuxi, JiangSu Province, P.R.China
Phone: +86-510-85386550
Fax: +86-510-85386553
Cell: +86-13806199712
E-mail: 1713216039@qq.com
Web: www.jact.cc

JACT

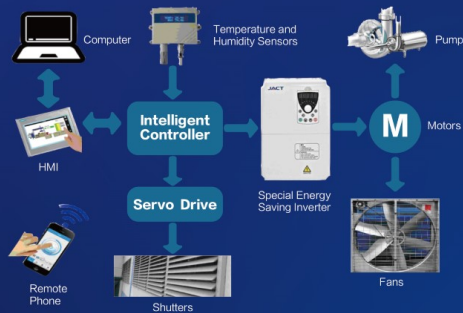


SEMS
Smart Energy Management System

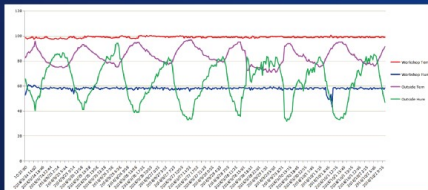
WUXI JACT ELECTRIC CO.,LTD.

Smart Energy Management System

SEMS, a complete system for AC room, which can make the temperature and humidity of workshop follow the setting point and control them more precisely. The temperature and humidity of environment, supply air, return air, water and workshop can be collected all the time, and then the controller will calculate the data according to the requirements, then the fan speed, shutter switch angle and pump spraying effect will be adjusted in real time through PID.



- 1) Five temperature sensors and five humidity sensors are added to SEMS for AC Room.
- 2) All the motors are controlled by special inverters.
- 3) All the shutters are controlled by the servo devices.

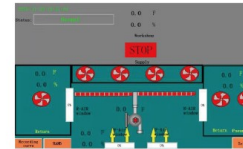


Whether in winter or summer, the temperature and humidity changes during the day, meanwhile SEMS will help the AC Room to control the temperature and humidity of the workshop steady automatically.



Features and Advantages

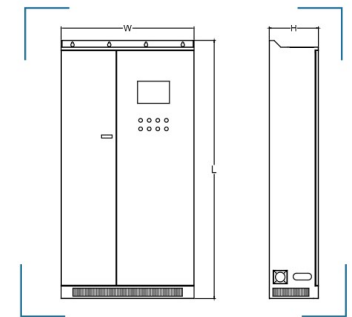
- ✓ Automatically control temperature and humidity
- ✓ Increase capacity up to 150% in worst season
- ✓ Temperature and humidity control become stable
- ✓ Improve the quality of the yarn more consistently
- ✓ Central automatically control the A/C, reduce the mistake by manual control
- ✓ Energy saving 20%-60% , payback in about 24 month



Payback in 12 Month

- ✓ Power: ESS-126kw
- ✓ Load rate:65%
- ✓ Power saving rate:30%
- ✓ Monthly electricity saving:17690kw/h
=126(kw)×65%×30%×30(d)×24(h)
- ✓ Electricity charge:\$0.1/kwh
- ✓ Monthly saving:\$1769
=17690(kwh)×\$0.1/kwh
- ✓ Cost of SEMS:\$21420
- ✓ Payback time≈\$21420/\$1769=12.1 months!

Model Selection of SEMS



MODEL SELECTION	APPEARANCE SIZE(mm)		
	H	W	L
8PCS-AT550-15/22kw-CQ	401.5	1620	2100
8PCS-AT550-30/37kw-CQ			
6PCS-AT550-15/22kw-CQ	401.5	1284	2100
6PCS-AT550-30/37kw-CQ			
4PCS-AT550-15/22kw-CQ	401.5	946	2100
4PCS-AT550-30/37kw-CQ			
8PCS-AT550-7.5/11kw-CQ	401.5	1084	2100